

Tuesday 10th November

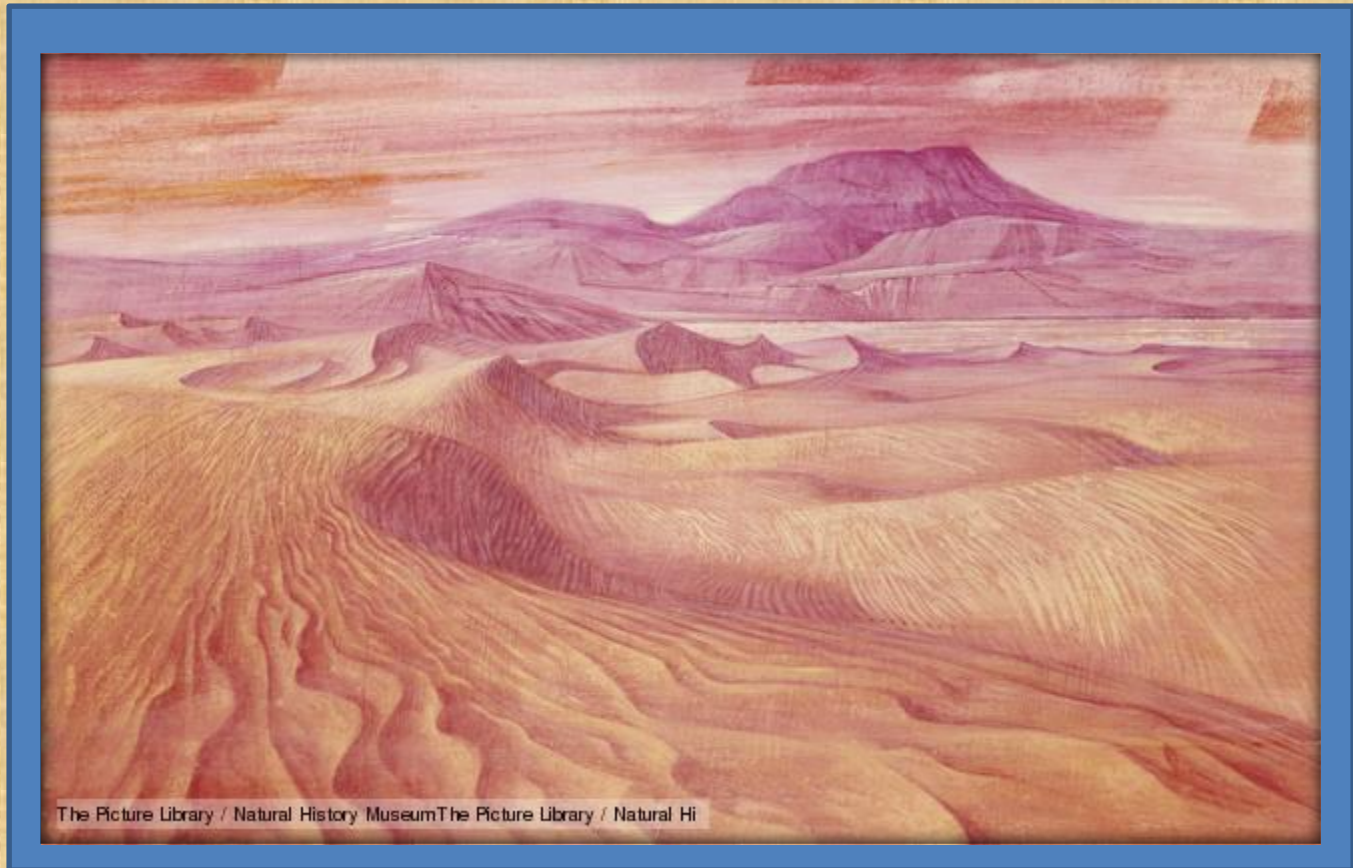
The Continental
Drift

Who can remind us of
our learning from last
week?

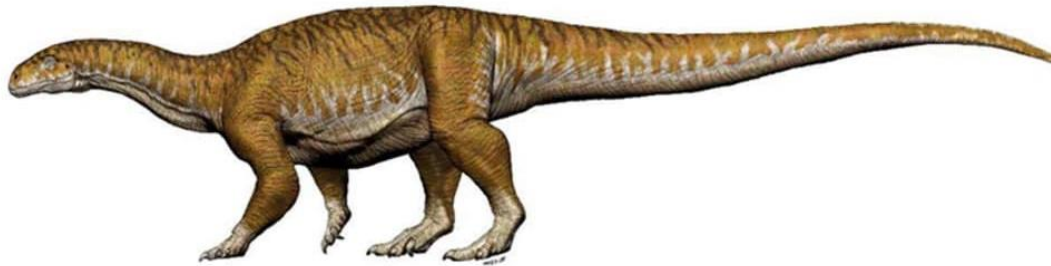
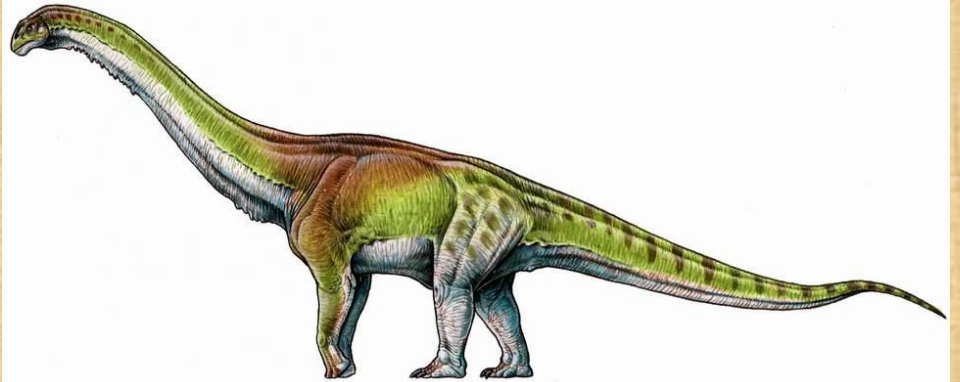


What did Pangaea look like?

It was very different to how earth looks today!
Scientists now know that it was very hot and much
of the land was not near the sea.



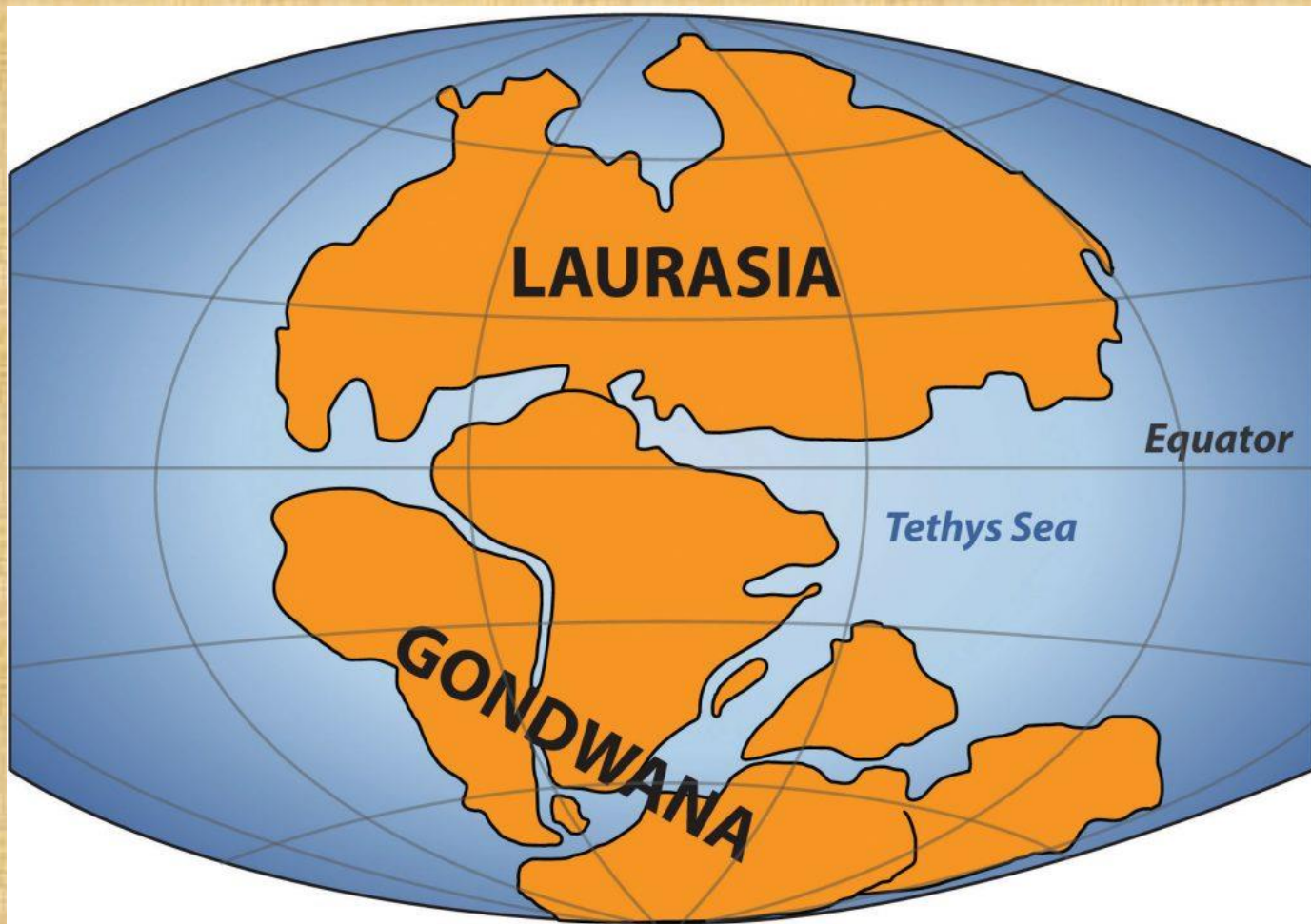
What animals lived millions
of years ago?



Dinosaurs!!

Dinosaurs enjoyed roaming around the hot, sandy desert.

That was until the Supercontinent split into two separate continents with a body of water between them.



TRIASSIC
200 million years ago

This split was called the
Continental Drift.

This was caused by
huge earthquakes.

Some of the dinosaurs were separated from each other and had to learn to survive in a different environment.



In time there were even more earthquakes which caused these two land masses to also break up and over millions of years, they split into smaller countries each with different weather types, plants and groups of dinosaurs.

This video shows how the continents moved over 150 million years!

<https://www.youtube.com/watch?v=WaUk94AdXPA>

The position of the continents today.
The continents are still slowly moving, at about the speed your fingernails grow.

