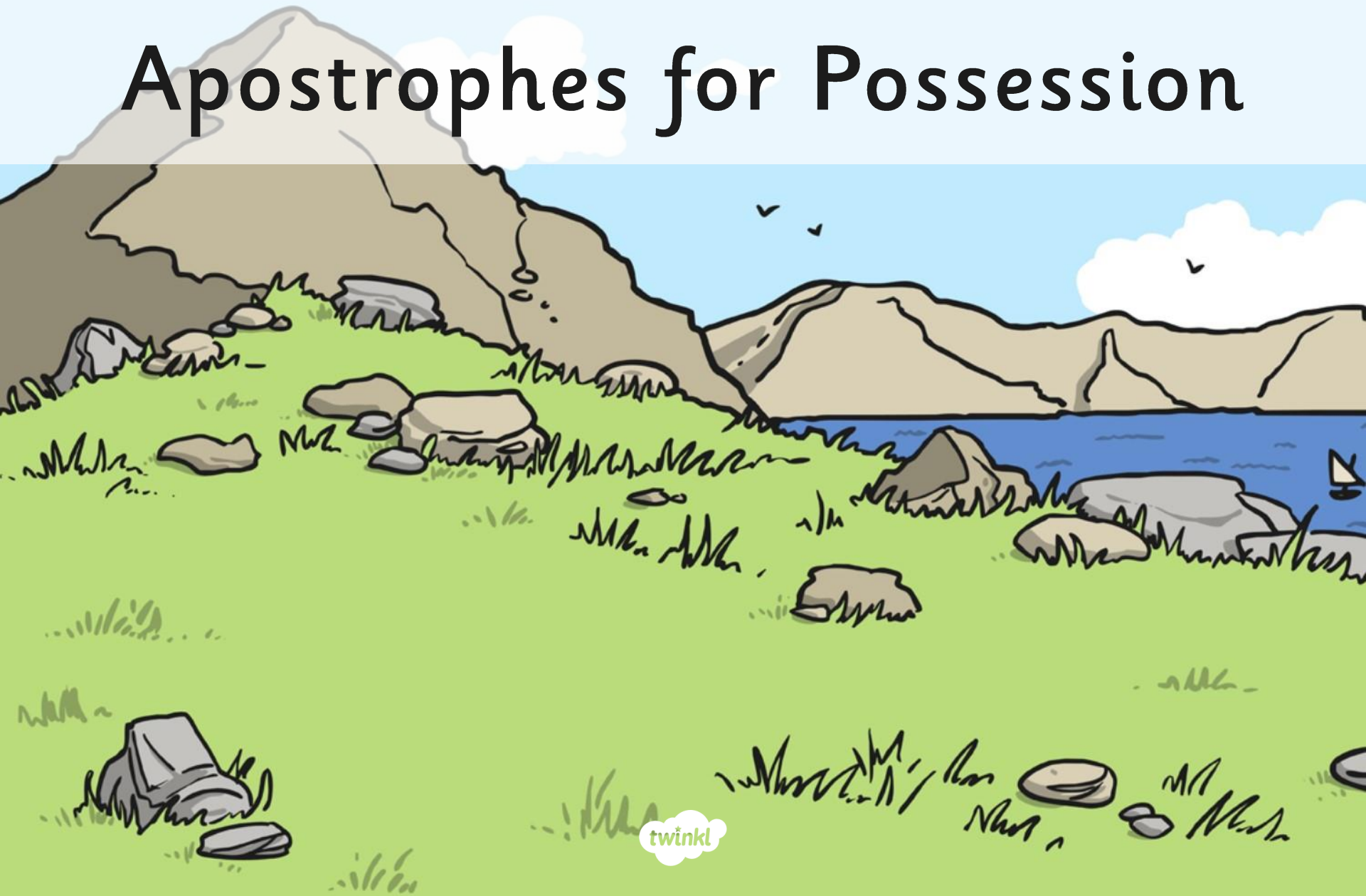
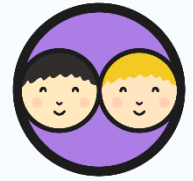


# Apostrophes for Possession



# Who Does It Belong To?

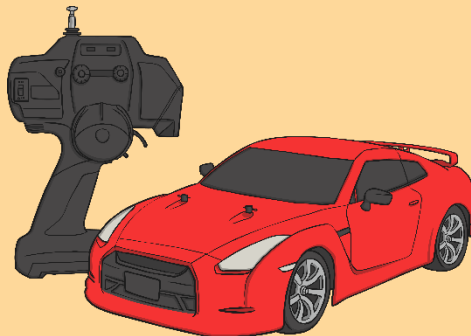


## Possession

When we own or have something it is called possession.



The blue bike belongs to Isa.

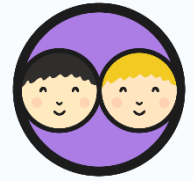


The red car belongs to Jodie.



The football belongs to Samera.

# Who Does It Belong To?



Work with your partner to work out which item belongs to each child and write a sentence on your whiteboard to explain. The first one has been done for you.

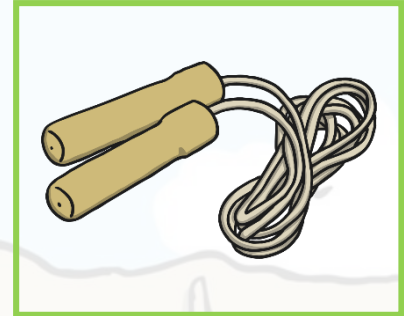
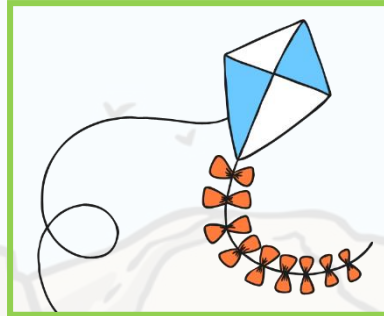
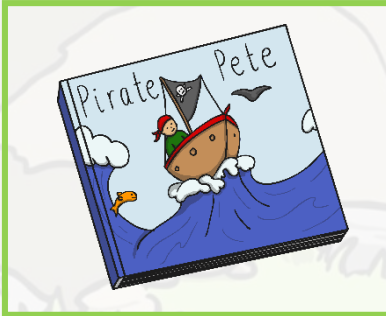
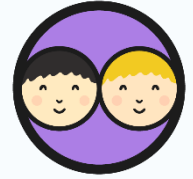
I love to  
ride my bike



Jacob

The blue bike  
belongs to Jacob.

# Who Does It Belong To?



My skateboard  
is very fast.

This kite is  
amazing.

I love my  
skipping rope.

This is my  
favourite book.



Sophie



Jared



Anna



Aqueeb

# Apostrophes to Show Possession



Sometimes using the words **belongs to** doesn't sound right.

For example if we were introducing someone we wouldn't say:

**These are the parents that belong to Maddison.**

What do you think we would say?

We would probably say:

**These are Maddison's parents.**





# Apostrophes to Show Possession



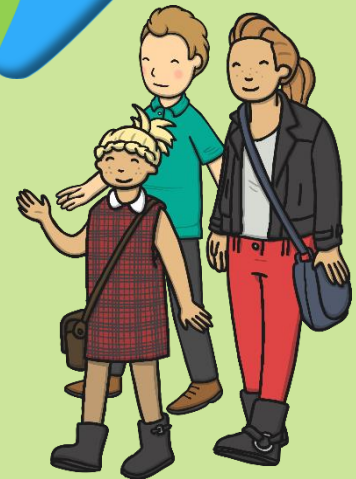
These are Maddison's parents.

What do you notice about this sentence?  
Look at the name Maddison.

This sentence contains an apostrophe.

The apostrophe in this sentence tells us that the parents belong to Maddison.

We need the apostrophe to make it clear to our reader who it belongs to.



# Apostrophes to Show Possession



When we say something belongs to someone, we add an 's' to the end of the word. However we also do this when the word becomes plural.

So we add an apostrophe before the 's' to show our reader we mean **'belongs to'**.

one cat



The cat's bed



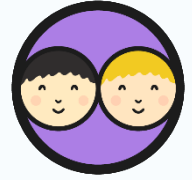
two cats



The dog's bed



# Apostrophes to Show Possession



On your whiteboards, rewrite the sentences below so that they contain an apostrophe. The first one has been done for you.

Remember when we are showing that something belongs to one person, we add the apostrophe before the 's'.

Everybody liked the green and yellow bag  
that belongs to Umar.



Everybody liked Umar's green and yellow bag.

The cute kitten  
belongs to Romy.

The toy castle  
belongs to Zuhara.



# Apostrophes for Possession



Use all of the information you have learnt and practiced about using apostrophes to mark possession.



Work on your own to complete the **Application Activity**.

## Apostrophes for Possession

The two characters below are wanted by the police. Can you help by writing a description of each?

You must use at least 3 possessive apostrophes for each character. For example, you could write: The girl's hair is long.



---

---

---

---

---

---

---

---