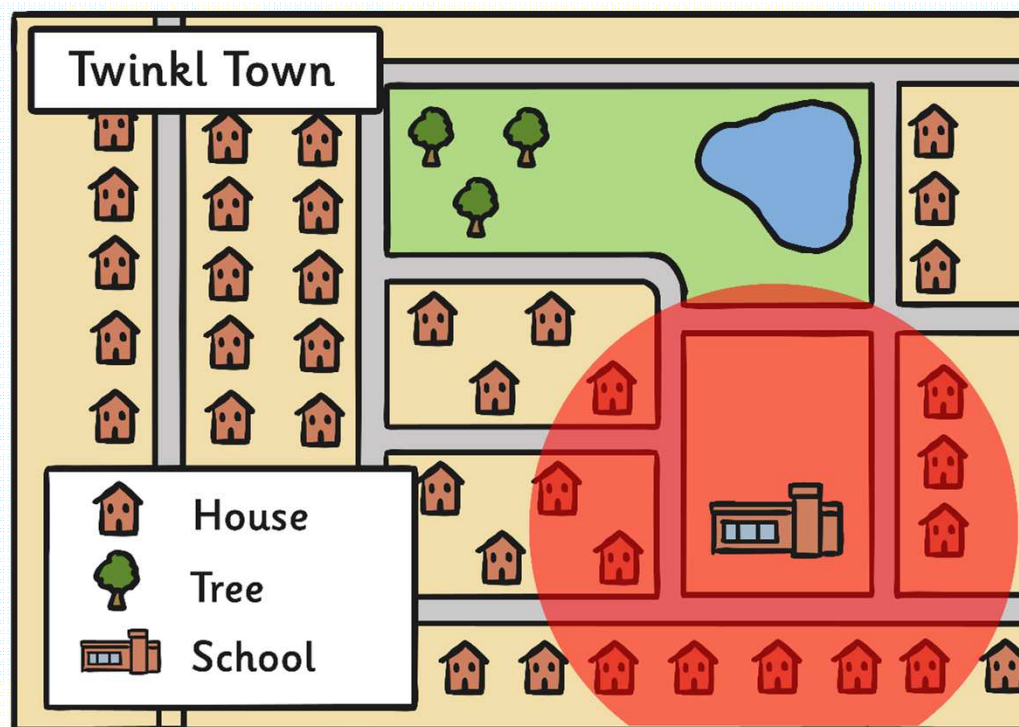


Monday 1st February

What is Our Local Area Like?



twinkl

Key Words



school



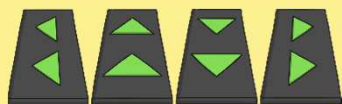
home



address



compass
(North, East, South, West)



directions



street map

local area

position

Photo courtesy of BarrettDiscovery_@flickr.com - granted under creative commons licence - attribution

Compass Challenge



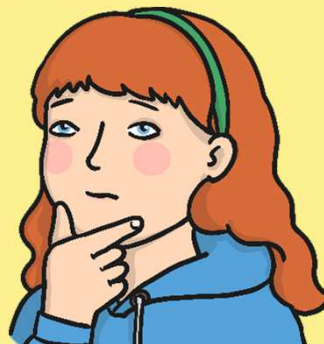
What can you remember about compass directions?

Use the challenge cards to follow the instructions and compass directions.



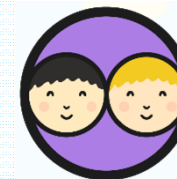
Challenge:

Can you remember clockwise and anti-clockwise?



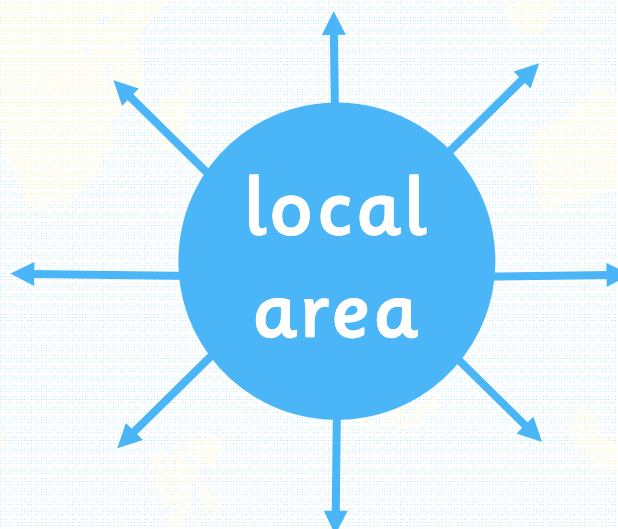
Can you think of a rhyme to remember N, E, S and W?

What is our local area like?



What is our local area called?

What do we know about where we live?



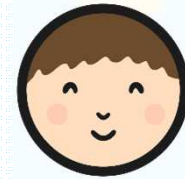
Mapping Our Local Area

How can we find places in our local area on a map?

Let's 'locate' some of the places we know



Find it!



Using an online mapping program, you are going to find out about your local area asking the question:
Where is it?



Use the Activity Sheet to find out where different places can be found – you will need to make notes as you go!

Our Local Area: Find It!

Using an online map program such as Google Maps, can you find the following places in your local area?

Place to find	Where is it? Street name/description of place
School	
Place of Worship	
Playground/Park	
Leisure Centre	
Supermarket	
Open Space	

Our Local Area: Find It!

Using Google Maps, can you find local area?

Where is it?
What is the place?